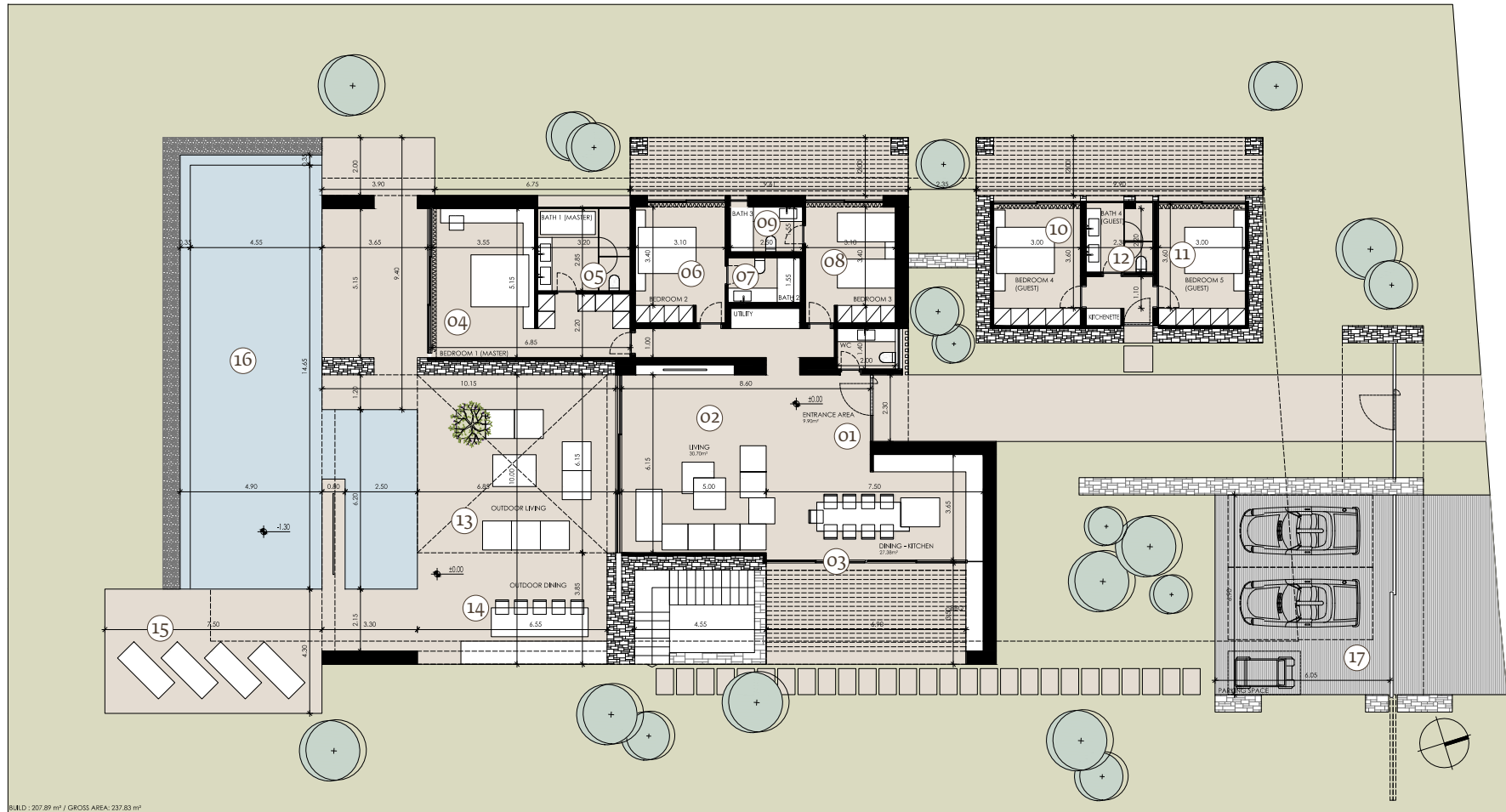


FIVE-BEDROOM VILLA IN OLIVE GROVE BY ISV

GROUND FLOOR

(Applicable to OG A10 & OG A13)



BUILD: 207.89 m² / GROSS AREA: 237.83 m²

- | | | |
|-----------------------|-------------------|------------------------------------|
| 01 Main entrance | 07 Bathroom | 13 Outdoor covered living area |
| 02 Indoor living area | 08 Double bedroom | 14 Outdoor dining area |
| 03 Indoor dining area | 09 Bathroom | 15 Sun - bed area |
| 04 Master bedroom | 10 Double bedroom | 16 Pool |
| 05 Master bathroom | 11 Double bedroom | 17 Outdoor car & golf cart parking |
| 06 Double bedroom | 12 Guest WC | |